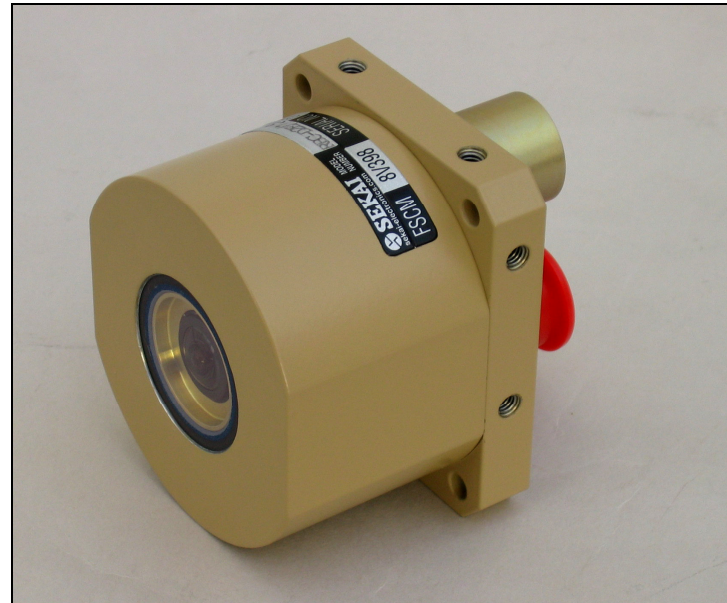


**Features**

- Small and Light Weight
- 1/4" CCD DSP Color Sensor
- Backlight Compensation
- NTSC standard, PAL version available
- CCD Iris
- Reverse Scan (Mirror) selectable
- Environmentally Sealed Housing
- Sapphire Window with EMI Protection

**General Description**

The RBC-D2EX.X camera is a very rugged and compact color CCD video camera (X.X = lens focal length, see below). The camera is well protected inside an environmentally sealed aluminum housing, finished in Lusterless Desert Tan and with a scratch resistant sapphire window. The housing can "breathe" through a Gore-Tex™ membrane minimizing maintenance requirements during long-term storage. Special care has been taken to protect the camera from EMI; all sealing o-rings are conductive, the front glass is conductive coated and all camera electronics are electronically isolated from the housing.

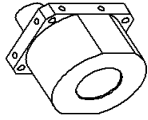

**Specifications**

<b>Image Sensor</b>	Inter-line Type 1/4" CCD Image Sensor
<b>Effec. Picture Element</b>	752 H x 582 V (PAL) 768 H x 494 V (NTSC)
<b>Signal System</b>	NTSC (PAL version available)
<b>Video Output</b>	1.0Vpp, 75 ohms
<b>Scanning System</b>	2 : 1 Interlace
<b>Synchronization System</b>	Internal
<b>Horizontal Resolution</b>	> 430 TVL
<b>Min. Illum. of Subject</b>	0.4 Lux (50 IRE, AGC ON, F1.4)
<b>S/N Ratio</b>	Better than 46dB
<b>Gamma Characteristics</b>	0.45 or 1.0
<b>AGC</b>	On/Off (+26 dB max)
<b>Electronic Iris - Off/On</b>	1/100~1/100,000sec. EIA 1/50 (1/60) to 1/120,000 sec.
<b>Power Supply Voltage</b>	10.8-13.2VDC
<b>Power Consumption</b>	110ma (@12VDC)
<b>Connector</b>	MIL-38999, Ser III
<b>Optional Lenses (X.X)</b>	f1.9mm, f3.0mm , f4.0mm F6.0mm, f8.0mm, f12.0mm (all lenses fixed iris, f=2.8)

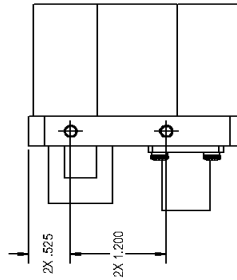
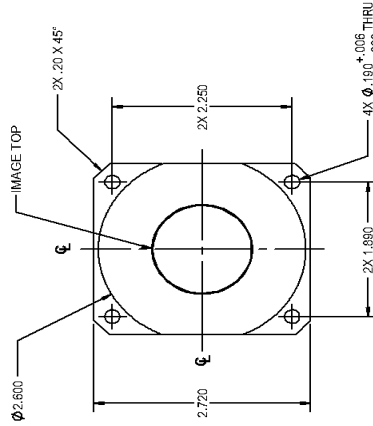
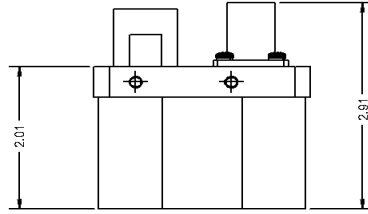
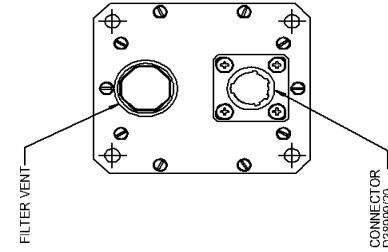
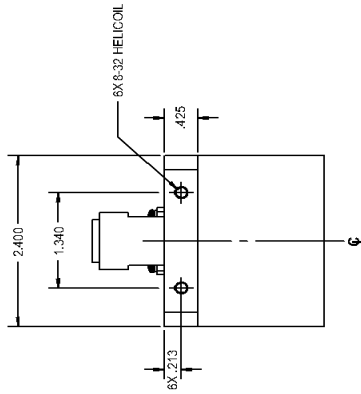
**Environmental Specifications**

<b>Storage Temperature</b>	46° to +71°
<b>Operating Temperature</b>	-40° to +60°
<b>Weight</b>	380 g
<b>Dimensions</b>	44.89mmH x 85.35mmW x 96.52mmD
<b>Altitude (Norm.Operational)*</b>	Sea Level to 50,000 ft.+
<b>Altitude (Non-Operational)*</b>	-15,000 ft. to 60,000 ft.+
<b>Explosive Atmosphere</b>	Sea Level to 50,000 ft. +
<b>Storage Humidity</b>	95% (50oC) to 85% (38oC)
<b>Operating Humidity</b>	5% to 100% relative humidity (condensing)
<b>Vibration (Operational)</b>	MIL-STD 810C, 514.2 (VIII), 70 hrs
<b>Shock (Operational)</b>	MIL-STD 810C, 516.2 (I), 30g, 3 dir
<b>EMI</b>	MIL-STD-461, Radiated RS02, RS03, 50V/m RE02

REV.	BY	DESCRIPTION	DATE	APPROVED
A	JC	RELEASED FOR TECHNICAL INFORMATION	11/05/07	FH
B	JC	INCREASED WIDTH TO 2.400 ADDED HOLES FOR CALLOUT FOR B3-2 RIBBER.	11/19/07	FH



ISOMETRIC VIEW  
SCALE 1:2



NOTICE  
THIS DOCUMENT CONTAINS PROPRIETARY INFORMATION OF SEKAI ELECTRONICS INC. ANY REPRODUCTION, DISSEMINATION, OR USE OF THIS INFORMATION WITHOUT WRITTEN AUTHORIZATION FROM SEKAI ELECTRONICS INC. IS PROHIBITED.

NOTE- UNLESS OTHERWISE SPECIFIED

ITEM	QTY	DASH NO.	DESCRIPTION	LIST OF MATERIALS	MATL.	FINISH
UNLESS OTHERWISE SPECIFIED DIMENSIONS ARE IN INCHES TOLERANCES ARE: X = ±.030 XX = ±.015 XXX = ±.005 ANGLES ±.1°						
CAD DRAWING: DO NOT MANUALLY UPDATE DRAWN BY: J. CARILLO 11/05/07 CHECKED: [ ] REVIEW: [ ] MATERIAL: MAIL						
DO NOT SCALE DRAWING						
FINISH	FINISH	FINISH	FINISH	FINISH	FINISH	FINISH
NET ASSY DWG	NET ASSY DWG	NET ASSY DWG	NET ASSY DWG	NET ASSY DWG	NET ASSY DWG	NET ASSY DWG
SCALE: 1:1	SCALE: 1:1	SCALE: 1:1	SCALE: 1:1	SCALE: 1:1	SCALE: 1:1	SCALE: 1:1
REV. B	REV. B	REV. B	REV. B	REV. B	REV. B	REV. B
TOP ASSEMBLY, RBC-D2E AND RBC-MD2E						REV. B
DWG. NO. 98RBCD2E-01						SHEET 1 OF 1

CONNECTOR PINOUT

PIN NO.	SIGNAL TYPE
1	GND (12VDC RETURN)
2	12VDC
3	VIDEO GND (SHIELD)
4	VIDEO
5	REVERSE ON (MIRRORED)
6	N/C