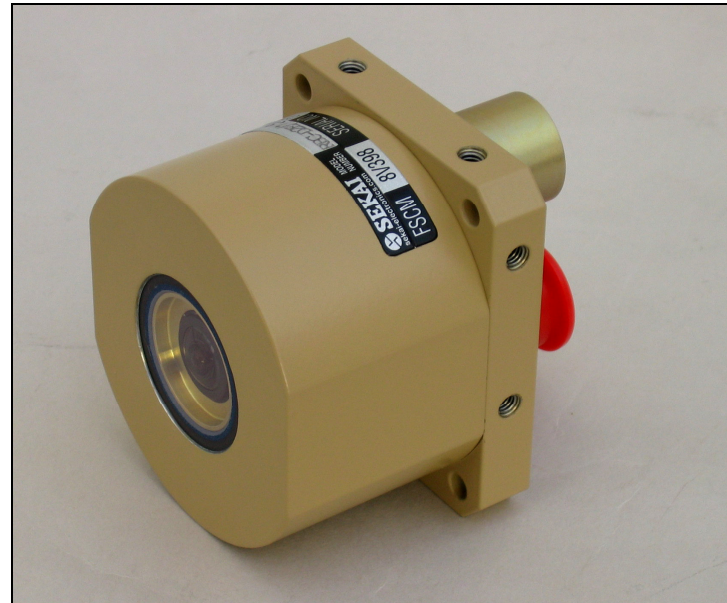


### Features

- Small and Light Weight
- 1/3" CCD DSP Black & White Sensor
- NTSC standard, PAL version available
- CCD Iris
- Reverse Scan (Mirror) selectable
- Environmentally Sealed Housing
- Sapphire Window with EMI Protection

### General Description

The RBC-MD2EX camera is a very rugged and compact monochrome CCD video camera (X.X = lens focal length, see below). The camera is well protected inside an environmentally sealed aluminum housing, finished in Lusterless Desert Tan and with a scratch resistant sapphire window. The housing can "breathe" through a Gore-Tex™ membrane minimizing maintenance requirements during long-term storage. Special care has been taken to protect the camera from EMI; all sealing o-rings are conductive, the front glass is conductive coated and all camera electronics are electronically isolated from the housing.



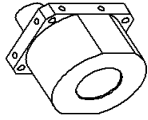
### Specifications

<b>Image Sensor</b>	1/3" CCD Image Sensor
<b>Effec. Picture Element</b>	510 H x 492 V
<b>Signal System</b>	EIA
<b>Video Output</b>	1.0Vpp, 75 ohms
<b>Scanning System</b>	2 : 1 Interlace
<b>Synchronization System</b>	Internal
<b>Horizontal Resolution</b>	420 TVL
<b>Min. Illum. of Subject</b>	0.2 Lux @ F2.0
<b>S/N Ratio</b>	Better than 48dB
<b>Gamma Characteristics</b>	0.45
<b>AGC</b>	On/Off (+26 dB max)
<b>Electronic Iris - Off/On</b>	1/60~1/100,000sec. EIA
<b>Power Supply Voltage</b>	10.8-13.2VDC
<b>Power Consumption</b>	1.2W Max
<b>Connector</b>	MIL-38999, Ser III
<b>Optional Lenses (X.X)</b>	f2.5mm, f6.0mm, f8.0mm, f12.0mm

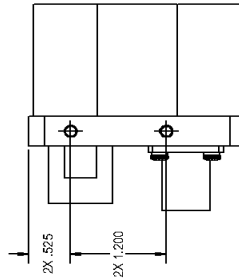
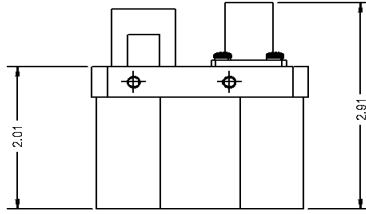
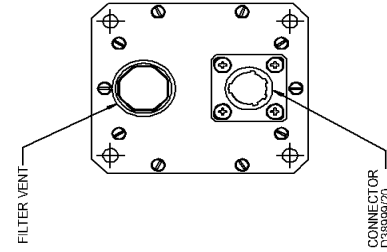
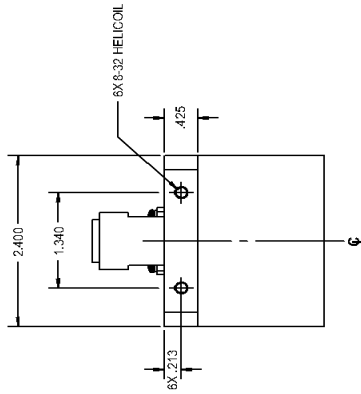
### Environmental Specifications

<b>Storage Temperature</b>	46° to +71°
<b>Operating Temperature</b>	-40° to +60°
<b>Weight</b>	380 g
<b>Dimensions</b>	44.89mmH x 85.35mmW x 96.52mmD
<b>Altitude (Norm.Operational)*</b>	Sea Level to 50,000 ft.+
<b>Altitude (Non-Operational)*</b>	-15,000 ft. to 60,000 ft.+
<b>Explosive Atmosphere</b>	Sea Level to 50,000 ft. +
<b>Storage Humidity</b>	95% (50oC) to 85% (38oC)
<b>Operating Humidity</b>	5% to 100% relative humidity (condensing)
<b>Vibration (Operational)</b>	MIL-STD 810C, 514.2 (VIII), 70 hrs
<b>Shock (Operational)</b>	MIL-STD 810C, 516.2 (I), 30g, 3 dir
<b>EMI</b>	MIL-STD-461, Radiated RS02, RS03, 50V/m RE02

REV.	BY	DESCRIPTION	DATE	APPROVED
A	JC	RELEASED FOR TECHNICAL INFORMATION	11/05/07	FH
B	JC	INCREASED WIDTH TO 2.400 ADDED HOLES FOR CALLOUT FOR B3-2 RIBBER.	11/19/07	FH



ISOMETRIC VIEW  
SCALE 1:2



NOTICE  
THIS DOCUMENT CONTAINS PROPRIETARY INFORMATION OF SEKAI ELECTRONICS INC. ANY REPRODUCTION, DISSEMINATION, OR USE OF THIS INFORMATION WITHOUT WRITTEN AUTHORIZATION FROM SEKAI ELECTRONICS INC. IS PROHIBITED.

NOTE- UNLESS OTHERWISE SPECIFIED

ITEM	QTY	DASH NO.	DESCRIPTION	LIST OF MATERIALS	MATL.	FINISH
UNLESS OTHERWISE SPECIFIED DIMENSIONS ARE IN INCHES TOLERANCES ARE: X" = ±.030 XX" = ±.015 XXX" = ±.005 ANGLES = ±1° DO NOT SCALE DRAWING						
C			SIZE	DWG. NO.	REV.	SCALE
C			SIZE	98RBCD2E-01	B	1:1
C			SIZE	98RBCD2E-01	B	1:1
C			SIZE	98RBCD2E-01	B	1:1

PIN NO.	SIGNAL TYPE
1	GND (12VDC RETURN)
2	12VDC
3	VIDEO GND (SHIELD)
4	VIDEO
5	REVERSE ON (MIRRORED)
6	N/C

CONNECTOR PINOUT

ITEM	QTY	DASH NO.	DESCRIPTION	LIST OF MATERIALS	MATL.	FINISH
UNLESS OTHERWISE SPECIFIED DIMENSIONS ARE IN INCHES TOLERANCES ARE: X" = ±.030 XX" = ±.015 XXX" = ±.005 ANGLES = ±1° DO NOT SCALE DRAWING						
C			SIZE	DWG. NO.	REV.	SCALE
C			SIZE	98RBCD2E-01	B	1:1
C			SIZE	98RBCD2E-01	B	1:1
C			SIZE	98RBCD2E-01	B	1:1

ITEM	QTY	DASH NO.	DESCRIPTION	LIST OF MATERIALS	MATL.	FINISH
UNLESS OTHERWISE SPECIFIED DIMENSIONS ARE IN INCHES TOLERANCES ARE: X" = ±.030 XX" = ±.015 XXX" = ±.005 ANGLES = ±1° DO NOT SCALE DRAWING						
C			SIZE	DWG. NO.	REV.	SCALE
C			SIZE	98RBCD2E-01	B	1:1
C			SIZE	98RBCD2E-01	B	1:1
C			SIZE	98RBCD2E-01	B	1:1

ITEM	QTY	DASH NO.	DESCRIPTION	LIST OF MATERIALS	MATL.	FINISH
UNLESS OTHERWISE SPECIFIED DIMENSIONS ARE IN INCHES TOLERANCES ARE: X" = ±.030 XX" = ±.015 XXX" = ±.005 ANGLES = ±1° DO NOT SCALE DRAWING						
C			SIZE	DWG. NO.	REV.	SCALE
C			SIZE	98RBCD2E-01	B	1:1
C			SIZE	98RBCD2E-01	B	1:1
C			SIZE	98RBCD2E-01	B	1:1

ITEM	QTY	DASH NO.	DESCRIPTION	LIST OF MATERIALS	MATL.	FINISH
UNLESS OTHERWISE SPECIFIED DIMENSIONS ARE IN INCHES TOLERANCES ARE: X" = ±.030 XX" = ±.015 XXX" = ±.005 ANGLES = ±1° DO NOT SCALE DRAWING						
C			SIZE	DWG. NO.	REV.	SCALE
C			SIZE	98RBCD2E-01	B	1:1
C			SIZE	98RBCD2E-01	B	1:1
C			SIZE	98RBCD2E-01	B	1:1

ITEM	QTY	DASH NO.	DESCRIPTION	LIST OF MATERIALS	MATL.	FINISH
UNLESS OTHERWISE SPECIFIED DIMENSIONS ARE IN INCHES TOLERANCES ARE: X" = ±.030 XX" = ±.015 XXX" = ±.005 ANGLES = ±1° DO NOT SCALE DRAWING						
C			SIZE	DWG. NO.	REV.	SCALE
C			SIZE	98RBCD2E-01	B	1:1
C			SIZE	98RBCD2E-01	B	1:1
C			SIZE	98RBCD2E-01	B	1:1

ITEM	QTY	DASH NO.	DESCRIPTION	LIST OF MATERIALS	MATL.	FINISH
UNLESS OTHERWISE SPECIFIED DIMENSIONS ARE IN INCHES TOLERANCES ARE: X" = ±.030 XX" = ±.015 XXX" = ±.005 ANGLES = ±1° DO NOT SCALE DRAWING						
C			SIZE	DWG. NO.	REV.	SCALE
C			SIZE	98RBCD2E-01	B	1:1
C			SIZE	98RBCD2E-01	B	1:1
C			SIZE	98RBCD2E-01	B	1:1

ITEM	QTY	DASH NO.	DESCRIPTION	LIST OF MATERIALS	MATL.	FINISH
UNLESS OTHERWISE SPECIFIED DIMENSIONS ARE IN INCHES TOLERANCES ARE: X" = ±.030 XX" = ±.015 XXX" = ±.005 ANGLES = ±1° DO NOT SCALE DRAWING						
C			SIZE	DWG. NO.	REV.	SCALE
C			SIZE	98RBCD2E-01	B	1:1
C			SIZE	98RBCD2E-01	B	1:1
C			SIZE	98RBCD2E-01	B	1:1